

### Torne Trail

Red • 0.72 mile • Hiking

Moderate • Short trail along rocky creek terrain

**Trailhead** Parking area on Otterhole Road.

**Torne Trail** heads south from road, passes Hewitt-Butler Trail, and ascends a moderate hill. The trail levels off at the base of a steeper hillside covered in rock slabs. The trail continues south and drops into a narrow rocky ravine with a small seasonal brook.

### Will Monroe Trail

Pink • 1 mile • Hiking

Moderate • Short loop trail with scenic views

**Trailhead** Wyanokie Circular Trail. **Will Monroe Trail** heads east along flat terrain to a ridgeline on Assiniwikam Mountain and then turns back to the west to rejoin Wyanokie Circular Trail.

### Wyanokie Circular Trail

Red & white • 3.8 miles • Hiking

Moderate • Challenging trail across rocky ridges

**Trailhead** Numerous access points along the trail. **Wyanokie Circular Trail** begins on the rocky hillside below the Roomy Mine and heads west across varied terrain. The trail passes Blue Mine Brook, ascends to Wyanokie High Point and then continues west across a broad hilltop. After passing Outlaw Trail, it turns north and intersects with the Otter Hole, Wyanokie Crest, and Will Monroe Trail. The trail ends at the park boundary.

### Wyanokie Crest Trail

Yellow • 4.3 miles • Hiking

Moderate • Follows ridgelines in central area of park

**Trailhead** Parking area on Glenwild Avenue.

**Wyanokie Crest Trail** travels through the varied landscape of southern Norvin Green State Forest. From Posts Brook, the trail ascends multiple hillsides and ridges before turning north-east and joining with the Wyanokie Circular Trail.

*This brochure was funded by the NJDEP and the FHWA Recreational Trails Program.*

## TRAIL SENSE AND SAFETY

**Trail Markings** Official trails are marked by colored blazes on posts and trees. For your safety and habitat protection, please stay on the trails and don't alter trail markings or create new trails.

**Preparations** Consider bringing water, snacks, sunscreen, insect repellent, and a hat. Dress for the weather. Tell someone where you plan to go and when you expect to return.

**Hunting** Sections are open to hunting. Bright orange clothing is recommended during hunting season.

**Pets** All pets must be on a leash (maximum 6 feet) and under the physical control of the owner. Please clean up after your pets.

**Carry-in/Carry-out** Help keep the forest clean and beautiful by carrying out your trash.

**Bear Aware** Bears are active in this area. Don't approach them. Bear sightings should be reported to State Park Police (1-877-927-6337) or to the park office.

**Forest Office Phone** (973) 962-2240

#### Emergency Numbers

1-877-WARN-DEP (1-877-927-6337) or 911

Explore Trail Tracker  
The Interactive Trails  
Map of NJ State Parks



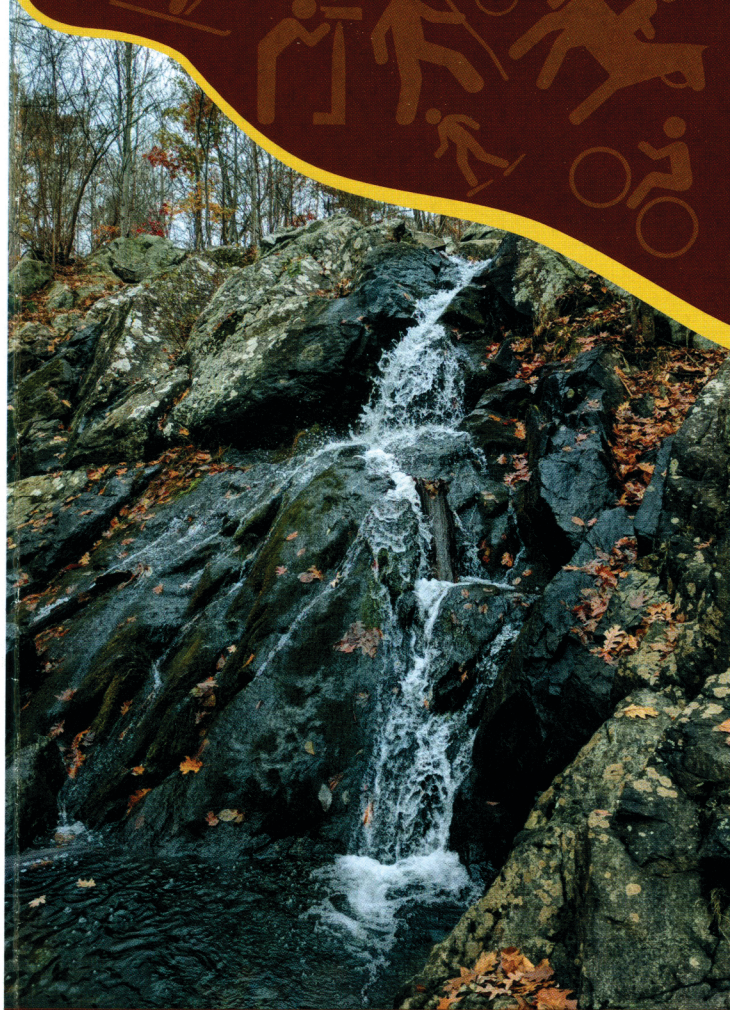
spstrailtracker.nj.gov

**Norvin Green State Forest**  
is administered by

**Ringwood State Park**  
1304 Sloatsburg Road  
Ringwood, NJ 07456  
(973) 962-2240

# TRAILS

of  
**Norvin Green  
State Forest**



State of New Jersey  
Department of Environmental Protection  
**Division of Parks and Forestry**  
**State Park Service**  
njparksandforests.org

TS 1/18

## TRAILS OF NORVIN GREEN STATE FOREST

There are 18 official trails totaling more than 50 miles in Norvin Green State Forest. Trails range from less than 1 mile to 10 miles in length. Trails are well-marked and hikers can vary their hiking distance and challenges by connecting sections of trail(s) to suit their needs. A section of the regional Highlands Trail runs through Norvin Green where it shares its route with existing trails.

### Carris Hill Trail

Yellow • 0.85 miles • Hiking

Difficult • Steep trail to summit of Carris Hill

**Trailhead** Hewitt-Butler or Lower Trail. **Carris Hill Trail** heads north and climbs a steep rise on sweeping switchbacks and through large rock piles to Carris Hill. The trail reaches a shoulder of the ridge with scenic views of Wanaque Reservoir.

### Hewitt-Butler Trail

Blue • 8.6 miles (in Norvin Green) • Hiking

Moderate • Cross-country trail through park

**Trailhead** Southern section from Highlands Natural Pool. Northern section on West Brook Road. **Hewitt-Butler Trail** travels north-south through the middle of Norvin Green and is divided into two sections. The trail passes through many notable scenic areas in the park, such as Otter Hole, Carris Hill, and Wyanokie High Point.

### Highlands Trail

Teal diamond • 7.7 miles (in Norvin Green) • Hiking

Moderate • Section of long distance trail

**Trailhead** Otter Hole parking area for west side and West Brook Road for east side. **Highlands Trail** is a long-distance, regional trail that crosses Norvin Green State Forest on existing trails. Highlands Trail generally travels east-west, then heads north into Long Pond Ironworks State Park.

### Lake Sonoma Trail

Orange • 1.3 miles • Hiking

Moderate • North-south connector trail

**Trailhead** Burnt Meadow Road. **Lake Sonoma Trail** travels across woodlands in the northern

portion of Norvin Green State Forest. The trail begins in open hardwood forests and intersects with Manaticut Point Trail.

### Lower Trail

White • 1.4 miles • Hiking

Moderate • Hillside trail to Posts Brook

**Trailhead** Wyanokie Circular Trail. **Lower Trail** heads south from Wyanokie Circular Trail along a broad hillside before descending to Posts Brook. The trail ends in the creek drainage where it intersects with Posts Brook Trail.

### Macopin Trail

White • 0.6 miles • Hiking

Moderate • Short trail along north-facing hillside

**Trailhead** Hewitt-Butler or Otter Hole Trail.

**Macopin Trail** is a short trail connecting the lower section of Otter Hole Trail with Hewitt-Butler Trail.

### Manaticut Point Trail

Yellow • 4.2 miles • Hiking

Moderate • Loop trail along forested ridge

**Trailhead** Parking on Crescent Drive.

**Manaticut Trail** heads west across open hardwood forest with large boulders to make a loop on the slopes above West Brook.

### Mine Trail

Yellow & white • 2.1 miles • Hiking

Moderate • Rocky trail to Roomy Mine

**Trailhead** Otter Hole Trail. **Mine Trail** travels through hilly, boulder-strewn ridges past Roomy Mine to Ball Mountain.

### Otter Hole Trail

Green • 2.7 miles • Hiking

Moderate • Connects primary parking areas

**Trailhead** Parking area on Snake Den Road.

**Otter Hole Trail** bends around the Highlands Natural Pool and along Blue Mine Brook. The trail turns to single-track as it ascends from the creek and turns south to join with Hewitt-Butler Trail, north of Posts Brook.

### Outlaw Trail

Orange • 0.24 miles • Hiking

Easy • Short connector trail

**Trailhead** Wyanokie Crest or Wyanokie Circular Trail. **Outlaw Trail** connects Wyanokie Circular Trail with Wyanokie Crest Trail.

### Overlook Rock Trail

White • 3.3 miles • Hiking

Moderate • Loop trail connects ridges with scenic views

**Trailhead** Hewitt-Butler Trail. **Overlook Rock Trail** can be accessed from Hewitt-Butler Trail north of Westbrook Road. The trail travels across rolling terrain and ridgelines through the northern portion of Norvin Green State Forest.

### Posts Brook Trail

White • 0.9 miles (in Norvin Green) • Hiking

Moderate • Trail south of reservoir to East Shore Drive

**Trailhead** Lower Trail. **Posts Brook Trail** starts from Hewitt-Butler Trail at Posts Brook and heads downstream, passing Chikahoki Falls. The trail turns south along a smaller side creek and leads through a forested area to end at East Shore Drive.

### Roomy Mine Trail

Orange • 1.3 miles • Hiking

Moderate • Winding trail to Roomy Mine

**Trailhead** Mine Trail. **Roomy Mine Trail** heads east from Mine Trail and crosses scenic Blue Mine Brook. After crossing the brook, the trail begins to wind around hillsides to the Roomy Mine, which extends about 60 feet into the slope. Roomy Mine Trail continues until it joins with Highlands Trail south of the parking area on West Brook Road.

### Stonetown Circular Trail

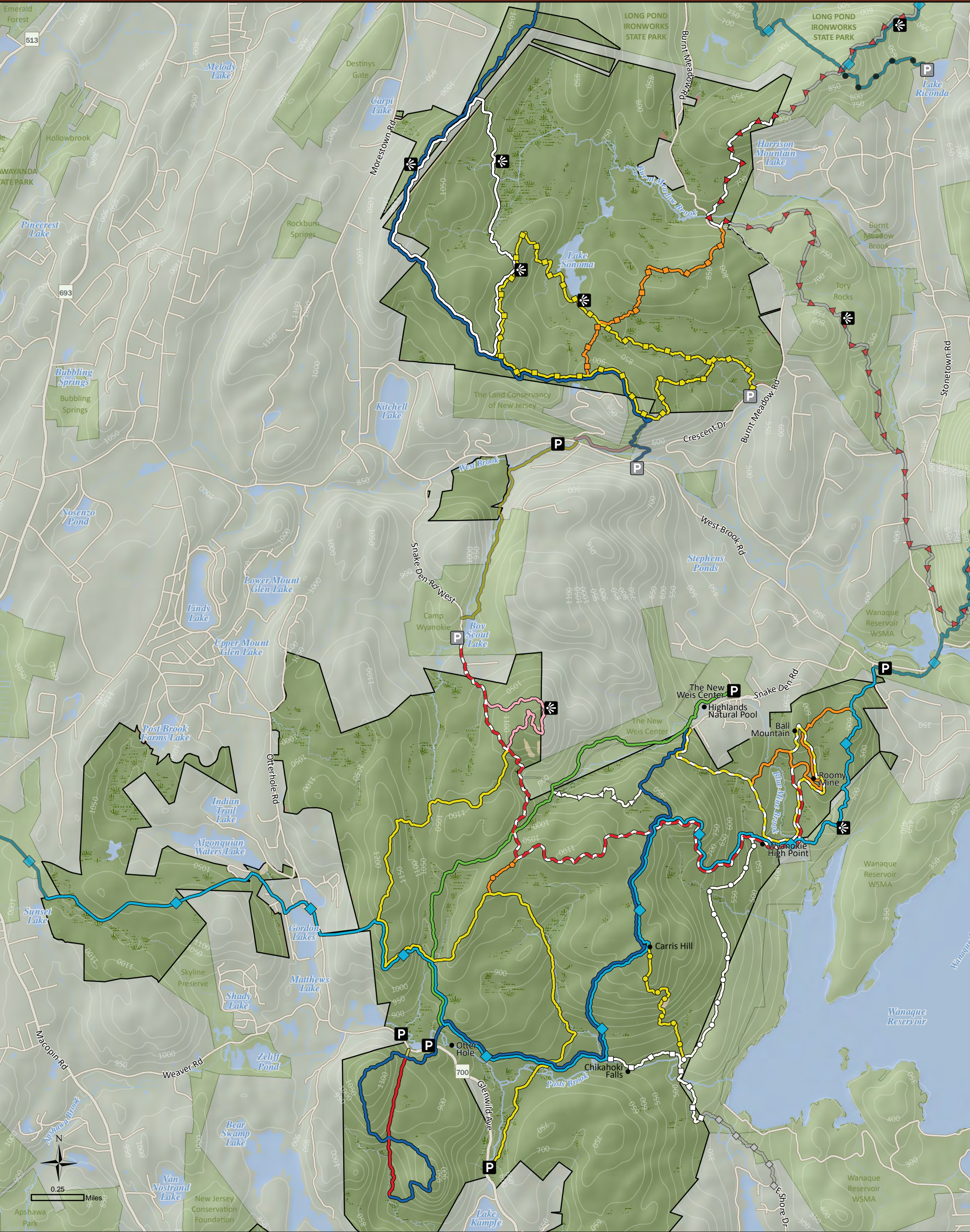
White & red • 1 mile (in Norvin Green) • Hiking

Moderate • Loop trail

**Trailhead** Numerous access points in Norvin Green and Long Pond. **Stonetown Circular Trail** is a 10.5-mile loop trail in northern Norvin Green and southern Long Pond Ironworks. It crosses through rolling, rocky terrain on the west side along Tory Rocks and Harrison Mountain. The trail descends to Monksville Reservoir and along the west side of Wanaque Reservoir as it crosses Board Mountain and Bear Mountain.



# NORVIN GREEN State Forest



- |                     |                                |                                   |                                  |                    |
|---------------------|--------------------------------|-----------------------------------|----------------------------------|--------------------|
| Open Field or Grass | Carris Hill Trail (0.85 mi)    | Mine Trail (2.1 mi)               | Torne Trail (0.72 mi)            | Parking Lot        |
| Forest              | Hewitt-Butler Trail (8.6 mi)   | Otter Hole Trail (2.7 mi)         | Will Monroe Trail (1.0 mi)       | Parking (Pull Off) |
| Water               | Highlands Trail (7.7 mi)       | Outlaw Trail (0.24 mi)            | Wyanokie Circular Trail (3.8 mi) | Scenic View        |
| Wetland             | Lake Sonoma Trail (1.3 mi)     | Overlook Rock Trail (3.3 mi)      | Wyanokie Crest Trail (4.3 mi)    |                    |
|                     | Lower Trail (1.4 mi)           | Posts Brook Trail (0.9 mi)        |                                  |                    |
|                     | Macopin Trail (0.6 mi)         | Romy Mine Trail (1.3 mi)          |                                  |                    |
|                     | Manaticut Point Trail (4.2 mi) | Stonetown Circular Trail (1.0 mi) |                                  |                    |